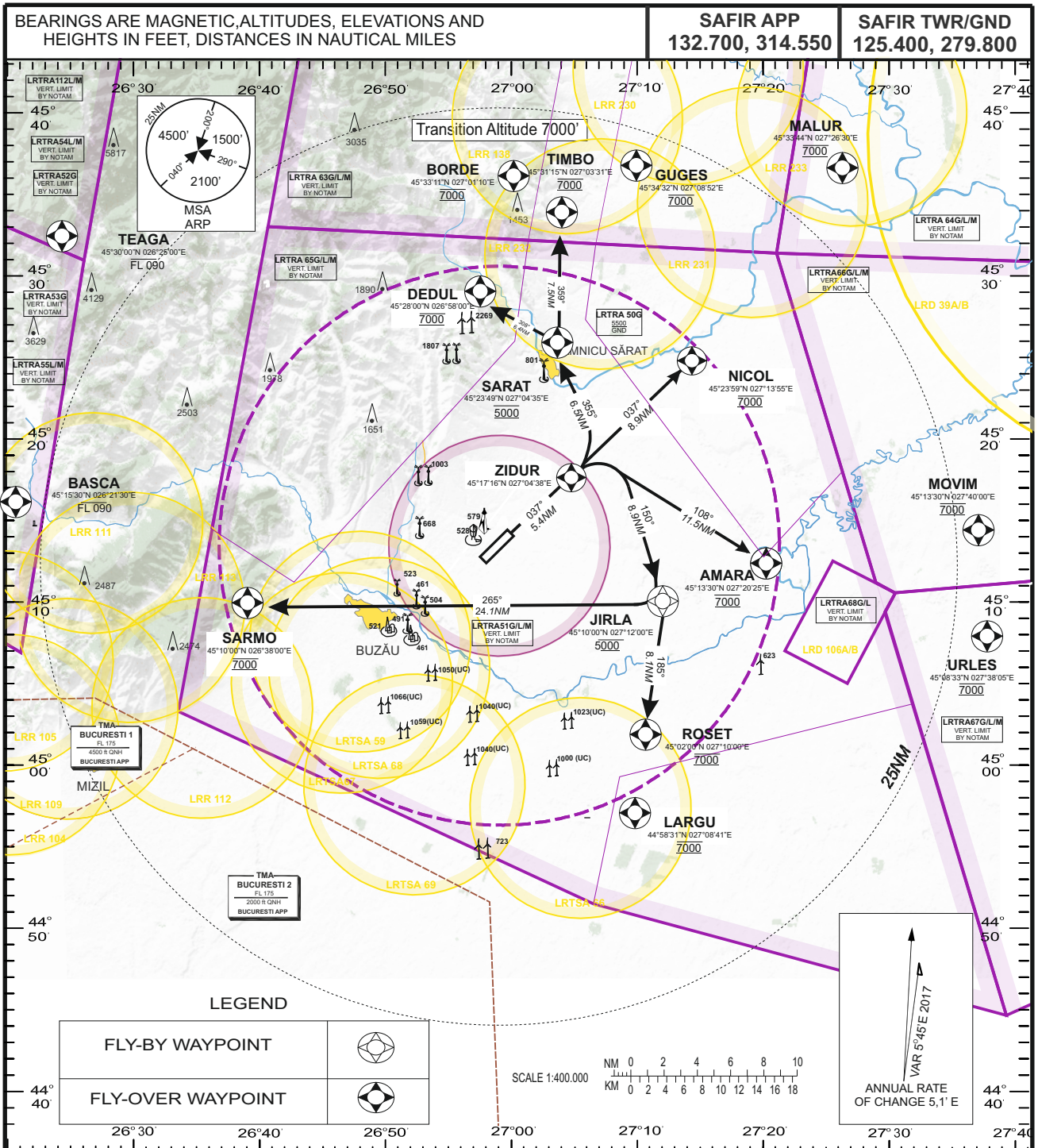


RNAV_(GNSS) STANDARD IFR DEPARTURE CHART

BOBOC (LRBO)
RWY 04

AMARA 1A, DEDUL 1A, NICOL 1A, ROSET 1A, SARMO 1A, TIMBO 1A



AMARA 1A Climb runway heading at 6° or above to 2300 ft QNH. At ZIDUR turn right inbound AMARA climbing to 7000 ft QNH.

DEDUL 1A Climb runway heading at 6° or above to 2300 ft QNH. At ZIDUR turn left inbound SARAT climbing to 5000 ft QNH, turn left inbound DEDUL climbing to 7000 ft QNH.

NICOL 1A Climb runway heading at 6° or above to 7000 ft QNH inbound NICOL.

ROSET 1A Climb runway heading at 6° or above to 2300 ft QNH. At ZIDUR turn right inbound JIRLA climbing to 5000 ft QNH, turn right inbound ROSET climbing to 7000 ft QNH.

SARMO 1A Climb runway heading at 6° or above to 2300ft QNH. At ZIDUR turn right inbound JIRLA climbing to 5000 ft QNH, turn right inbound SARMO climbing to 7000 ft QNH.

TIMBO 1A Climb runway heading at 6° or above to 2300 ft QNH. At ZIDUR turn left inbound SARAT climbing to 5000 ft QNH, turn right inbound TIMBO climbing to 7000 ft QNH.

NOTE: 1. LRR101, LRR102, LRR103, LRR104, LRR105, LRR106, LRR107, LRR108, LRR109, LRR110, LRR111, LRR112, LRR113, LRR130, LRR138, LRR230, LRR231, LRR232, LRR233 are anti-hail Rocket firing areas, vertical limits from GND to FL 255, active by NOTAM.
2. LRTSA59, LRTSA66, LRTSA67, LRTSA68, LRTSA69, LRD39, LRD106 are military exercise and training areas. Dates, times and vertical limits are issued by NOTAM.
3. Do not climb above 7000 ft unless explicitly authorized by APP.

CO-ORDINATES	
AMARA	45° 13'15" N 027°20'25" E
BASCA	45° 15'30" N 026°21'30" E
BORDE	45° 33'11" N 027°01'10" E
DEDUL	45° 28'00" N 026°58'00" E
GUGES	45° 34'32" N 027°08'52" E
JIRLA	45° 10'00" N 027°12'00" E
LARGU	44° 58'31" N 027°08'41" E
MALUR	45° 33'44" N 027°26'30" E
MOVIM	45° 13'30" N 027°40'00" E
NICOL	45° 23'59" N 027°13'55" E
ROSET	45° 02'00" N 027°10'00" E
SARAT	45° 23'49" N 027°04'35" E
SARMO	45° 10'00" N 026°38'00" E
TEAGA	45° 30'00" N 026°25'00" E
TIMBO	45° 31'15" N 027°03'31" E
URLES	45° 08'33" N 027°38'05" E
ZIDUR	45° 17'16" N 027°04'38" E

RADIO COMMUNICATION FAILURE

Set transponder to 7600 then:

a) Continue on assigned and acknowledged SID. After 2 min. from setting 7600 proceed climb to FPL flight level.

b) If being vectored, continue on assigned heading for 2 minutes from setting 7600. Then proceed direct to the last SID REP climbing to FPL flight level.